

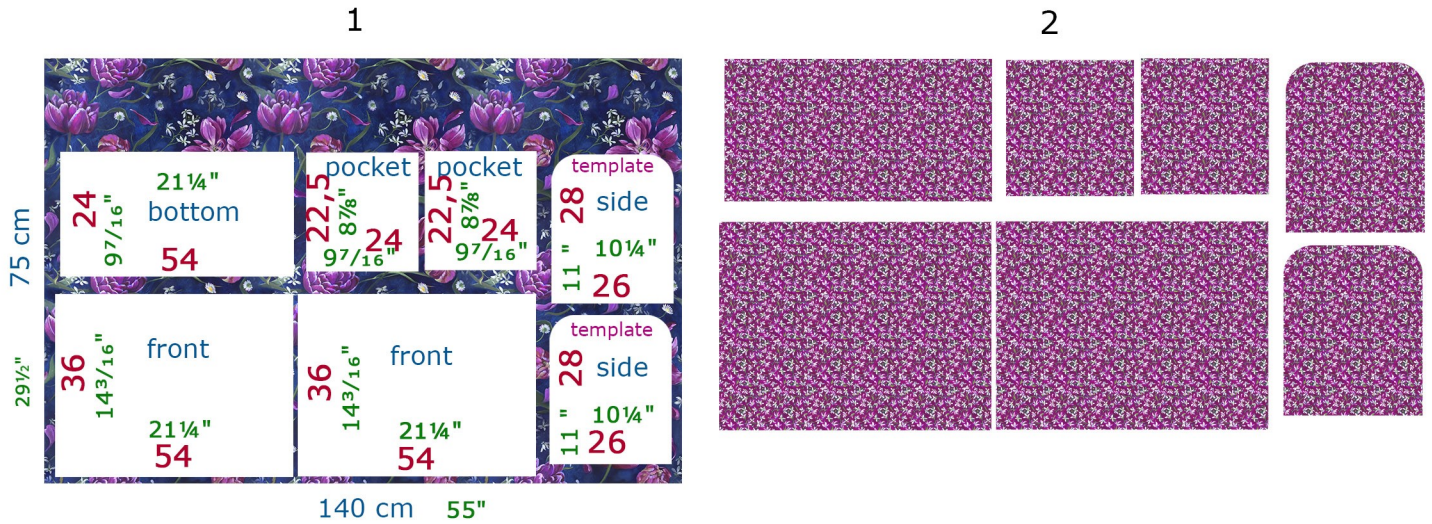
# TULIPS BAG TUTORIAL

Optional material to provide: fusible fleece and jeffitex (or cardboard)

Préparation:

1 Cut out the required pieces from the velvet (see placement diagram), 1cm ( 3/8") seam allowances are included. Fuse the fleece interfacing, if using, to the reverse side of the lining, except for the pockets (this gives the bag a little more shape).

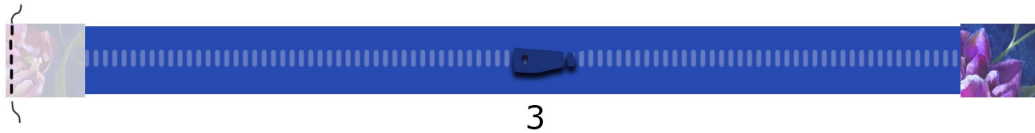
2 Cut the same pieces (as in step 1) from the lining. Cut 2 1.25 m pieces from the webbing strap.



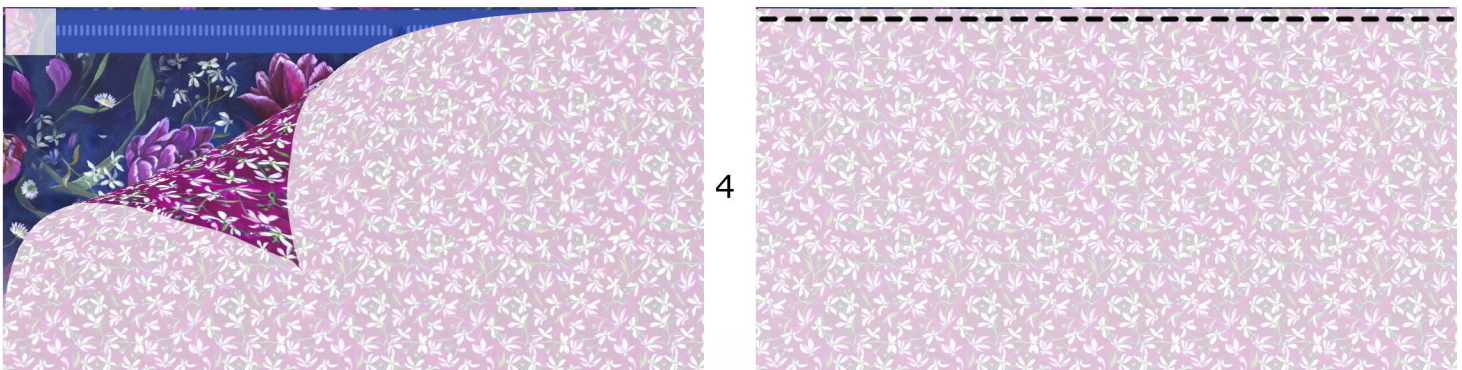
Zipper:

3 Cut 2 rectangles of velvet 4x5 cm (1½" x 2") .

Position them at the ends of the zipper, right sides together, stitch and turn to the right side.



4 Place the zipper at the top of one of the large rectangles (right sides together), take the equivalent lining piece and place it on top (right side against the right side of the velvet) and stitch along the entire length.



5 Turn to the right side and topstitch.



6 Sandwich the unstitched side of the zipper between the other face of the velvet and its lining, stitch along the edge.



6

7 Lay flat and topstitch along the zipper. Open the zipper halfway to facilitate final turning.



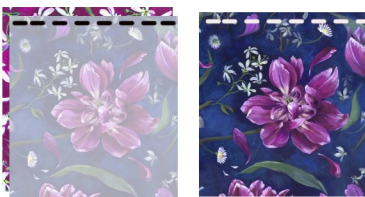
7

Pockets :

8 Place the velvet and lining pocket pieces right sides together, stitch the top, turn and topstitch.

9 Position the pocket in the middle of the bag, (matching center bottom) place the strap astride the edge of the pocket and return it over to the other side of the pocket to form the handle (be careful not to twist the strap when placing). Secure with clips

10 Mark the 2 sides of the strap at 28 cm (11") from the bottom of the bag and stitch along the edges of the strap. repeat these steps with the other side of the bag.



8



9



10

## Assembly

11 Stitch the velvet bottom to the velvet part of each of the assembled faces (right side together) .

12 Stitch the lining bottom to the lining faces in the same way, leaving a 15 cm (6") opening for turning later.



11



12

### Velvet sides:

13 Use pins to mark the middle of the side and the middle of the bottom, and align them with each other, right sides together, using multiple clips (or pins) to match up the rounded shape.

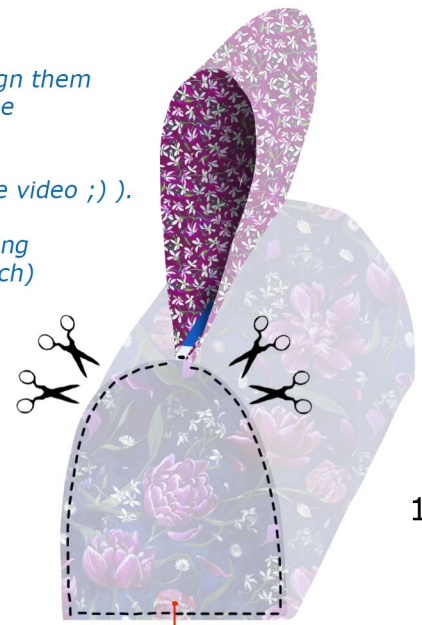
Start sewing from the middle mark at the bottom of the bag.

Clip into the curves as you stitch to follow the curve (you can see this trick on the video ; ) ).

When you reach the zipper, stop the stitching with a back stitch, fold over the lining and stitch between the 2 lined parts (again starting and stopping with a back stitch)

Return to the velvet side to complete the stitching.

Repeat these steps with the other velvet side.



13



14

### Lined sides

14 Assemble as for the velvet side.

When you reach the zipper, fold over the velvet, stitch over the previous seam (the 2 cm (5/8") on the zipper) then continue your stitching to close the bag on the lining side, clipping into the rounded edges.

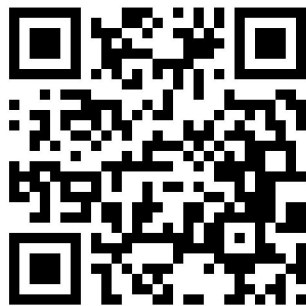
15 Turn the bag inside out through the opening in the lining, then turn right side out through the zipper opening.

16 (optional) Slide a piece of 52 cm x 22cm (20½" x 8¾" ) from Jefitex through the opening in the lining, then close it.

Template  
1/2  
side  
Tulip bag

middle fold

2cm  
check  
the scale  
if you  
print !  
2cm  
3/4"  
3/4"



Your video  
tutorial! ↗